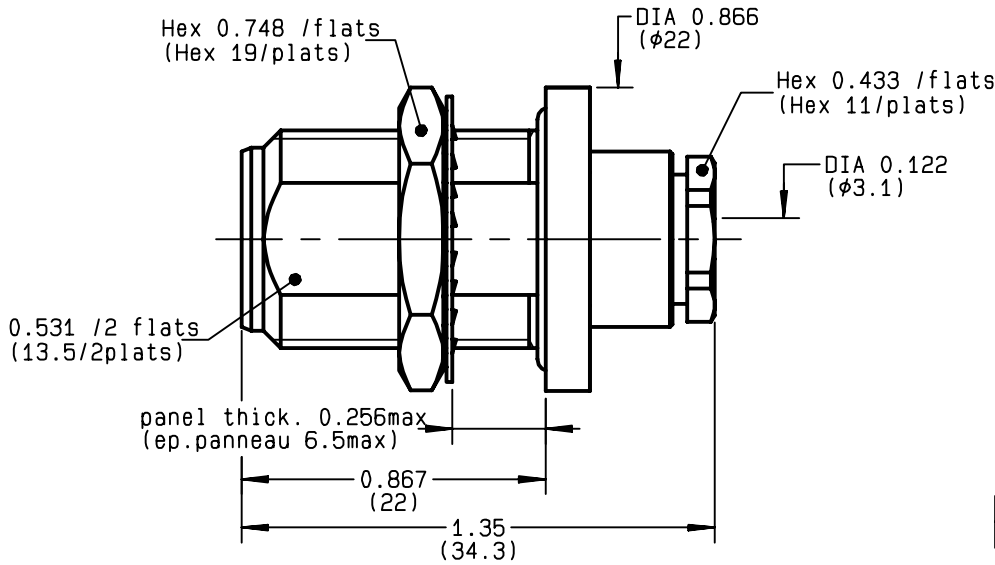
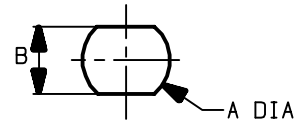


**STRAIGHT BULKHEAD JACK PANEL SEAL**  
**CLAMP TYPE - CABLE 2.6/50+75 - PACK. 50**

**R161.322.010**  
**SERIES N**



PERCAGE PANNEAU  
 MOUNTING HOLE



	MM		INCH	
	maxi	mini	maxi	mini
A	16.1	16	0.634	0.63
B	13.7	13.6	0.539	0.535

NOMINAL IMPEDANCE	<b>50</b>	Ω
FREQUENCY RANGE	<b>0-11</b>	GHz
TEMPERATURE RATING	<b>-55/+155</b>	°C
V.S.W.R	<b>1.40</b> +	x F(GHz)Maxi
RF INSERTION LOSS	<b>0.048</b>	√F(GHz) dB Maxi
VOLTAGE RATING	<b>250</b>	Veff Maxi
DIELECTRIC WITHSTANDING VOLTAGE	<b>750</b>	Veff Mini
INSULATION RESISTANCE	<b>5000</b>	MΩMini
HERMETIC SEAL	<b>NA</b>	Atm.cm <sup>3</sup> /s
LEAKAGE (pressurized only)	<b>NA</b>	
MECHANICAL DURABILITY	<b>500</b>	Cycles
WEIGHT	<b>41.3</b>	gr
SPECIFICATION		

CABLES : **K02252D**  
**K02252D SPL**  
**KX 22A**  
**RD 316**  
**RG 179**  
**RG 187**  
**RG 188**  
**RG 316**

OTHERS CHARACTERISTICS

CABLE RETENTION	<b>40</b>	N Mini
CENTER CONTACT RETENTION		
Axial force - mating end	<b>27</b>	N Mini
Axial force - opposite end	<b>27</b>	N Mini
Torque	<b>NA</b>	cm.N Mini
RECOMMENDED TORQUES		
Mating	<b>NA</b>	cm.N
Panel nut	<b>500</b>	cm.N
Clamp nut	<b>150</b>	cm.N

CONNECTOR PARTS	MATERIALS	FINISH	(all values are given in micrometers)
BODY	BRASS	BBR 2	
OUTER CONTACT	BRASS	BBR 2	
CENTER CONTACT	BERYLLIUM COPPER	GOLD 1.3 OVER NICKEL 4	
INSULATOR	PTFE	-	
GASKET	SILICONE RUBBER	-	
OTHERS PIECES	BRASS	BBR 2	

BONOMINI

ISSUE	CREATION DATE	FILE PART-NUMBER
<b>9838G00</b>	<b>07/05/1993</b>	<b>EPC 96-07</b>



**RADIALL®**

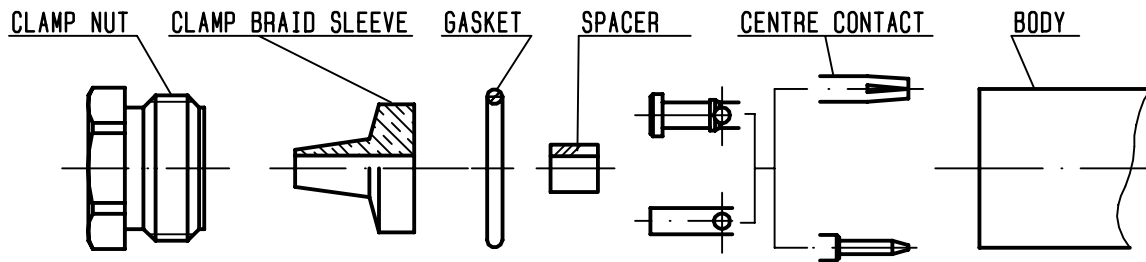
The information given here is subject to change without notice.  
 Design changes may be in order to improve the product .

*Connect to the future*



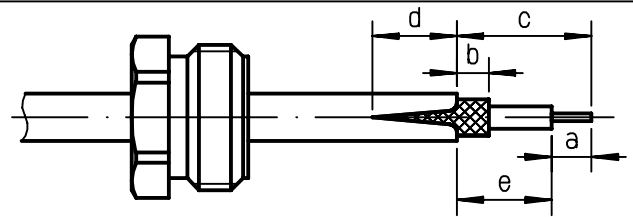
**R161.322.010**

ISSUE **9838600** SERIES **N**



①

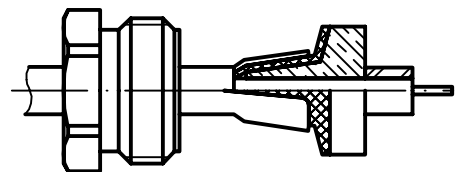
Slide clamp nut onto cable .  
Strip the cable .  
Cut the jacket ( 2 slots )  
apart if necessary .  
-



Stripping	a	b	c	d	e
inch	0.157	0.079	0.315	0.079	0.157
mm	4	2	8	2	4

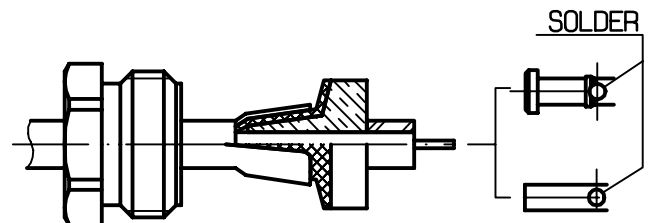
②

Slide the clamp braid sleeve between  
cable dielectric and braid .  
Cut the braid flush with the clamp  
braid sleeve .  
Slide the spacer .  
-



③

Solder the cable inner conductor into  
centre contact .  
Slide the back nut over the clamp  
assembly .  
-  
-  
-



④

Mount the gasket into the connector .  
Screw sub-assembly into the connector  
body .  
( recommended coupling torque 13.27 in.lb )  
-

